



Method Validation for Determination of Metformin Hydrochloride in Pharmaceutical Formulations by Capillary Electrophoresis with Capacitively Coupled Contactless Conductivity Detection

**Gazala Mohamed Ben-Hander^{1*}, Ashraf Ahmed Ali Abdusalam²,
Bahrudin Saad³, Ahmad Makahleh⁴ and Salizawati Muhamad Salhimi⁵**

¹*Department of Chemistry, Faculty of Science, Sirte University, Sirte, Libya.*

²*Department of Pharmaceutical Sciences, Faculty of Health Sciences, Sirte University, Sirte, Libya.*

³*Department of Fundamental and Applied Sciences, Universiti Teknologi Petronas, Perak, Malaysia.*

⁴*Department of Chemistry, University of Jordan, Amman, Jordan.*

⁵*School of Pharmaceutical Sciences, Universiti Sains Malaysia, 11800 Minden, Penang, Malaysia.*

Authors' contributions

This work was carried out in collaboration among all authors. All authors read and approved the final manuscript.

Article Information

DOI: 10.9734/CSJI/2019/v26i130081

Editor(s):

(1) Prof. Akmal S. Gaballa, Faculty of Specific Education, Zagazig University, Zagazig, Egypt.

Reviewers:

(1) Dr. Syed Umer Jan, University of Balochistan, Pakistan.

(2) Dr. Vijay Sharma, IFTM University, India.

Complete Peer review History: <http://www.sdiarticle3.com/review-history/47236>

Original Research Article

Received 30 October 2018

Accepted 12 February 2019

Published 13 March 2019

ABSTRACT

A method for the determination of metformin hydrochloride (MH) in pharmaceutical formulations by capillary electrophoresis with capacitively coupled contactless conductivity (C⁴D) detection was investigated. The separation was achieved under normal polarity mode at 17.5°C, 30 kV, hydrodynamic injection (50 mbar for 8 s) and using a bare fused silica capillary 72 cm × 75 μm i.d. (detection length, 10.5 cm from the outlet end of the capillary). The optimized background electrolyte consisted of 10 mM 2-morpholinoethanesulfonic acid and 10 mM histidine, pH 6.8. C⁴D parameters were set at fixed amplitude of 100 V and frequency of 650 kHz. Under the optimum conditions, the method shows good linearity over the range of 10-30 μg mL⁻¹ MH ($r^2=0.9971$). Limits of detection

*Corresponding author: E-mail: gbenhander@yahoo.com.

and quantitation based on S/N ratio of 3 and 10 were 0.049 and 0.15 $\mu\text{g mL}^{-1}$, respectively. The proposed method was successfully applied to the assay of MH in pharmaceutical formulations and establishing the dissolution profiles for both immediate and extended release formulations of MH.

Keywords: CE-C4D; metformin hydrochloride; drug product; dissolution profile.

1. INTRODUCTION

Metformin hydrochloride (MH) (N, N-dimethylimidodicarbonimidic diamide hydrochloride (Fig. 1 (a)) is recommended as an antihyperglycemic drug that stimulates glycolysis in peripheral tissues [1]. It is an oral biguanide drug that is formulated as tablet dosage form. This drug, either alone or in combination with other drugs, is currently one of the mainstays in the management of type 2 diabetes. It is often recommended for obese patients as it does not cause weight gain and has been shown to possess lipid-lowering properties [2,3]. It can increase insulin sensitivity, improves glucose tolerance and reduces hepatic glucose production [4].

Several methods have been published for the analysis of MH in pharmaceutical preparations, human plasma, urine, breast milk, dietary supplements and herbal medicines, etc. Gas chromatography (GC) either with mass spectrometry (MS) [5] or flame ionization (FID) [6] have been reported. As MH is nonvolatile, derivatization procedure (which are tedious and time consuming) is mandatory to increase the volatility and overcome adsorption of the polar functional groups to the GC column. High performance liquid chromatography (HPLC) coupled with ultraviolet (UV) absorption [7-18], fluorescence [19] and MS detection [4,20-25] are currently the most commonly used methods for the analysis of MH. Generally, LC methods provide satisfactory quantification together with acceptable sensitivity. However, LC methods in general require long analysis time and consume large amounts of solvent.

A few capillary electrophoresis (CE) methods have also been reported for the determination of MH in pharmaceutical products blood plasma and urine [26-35]. The main advantages of CE over HPLC are the higher separation efficiency, reduced sample and reagent consumption and shorter analysis time. The combination of CE with capacitively coupled contactless conductivity detection (C^4D) is an attractive analytical technique that has been employed for numerous applications, including pharmaceutical analysis.

C^4D can be considered as a general detection technique which shows good sensitivity for ionic species [36-38]. The popularity of C^4D detector has been growing due to its robustness, minimal maintenance demands and low cost [39]. There are a number of recent general review articles that discussed applications of C^4D in CE [40-43].

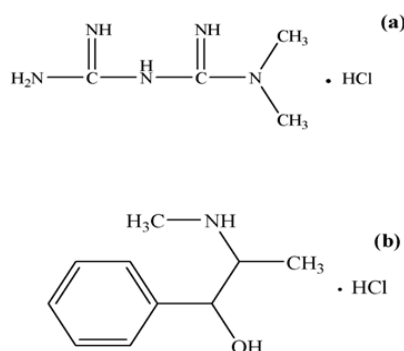


Fig. 1. Chemical structures of (a) MH and (b) pseudoephedrine hydrochloride (internal standard) used in the study

The main aim of this work was to develop and validate a CE- C^4D method for the determination of MH. The method will be used for the determination of MH in formulations and also to evaluate the dissolution profiles of drug products which are normally achieved using UV spectrophotometry or HPLC methods. Pseudoephedrine HCl (Fig. 1 (b)) was used as an internal standard (IS).

2. EXPERIMENTAL

2.1 Chemicals and Reagents

Metformin HCl (MH) and pseudoephedrine HCl (PEH) were kindly donated by Hikma Pharmaceuticals (Amman, Jordan). 2 (N-Morpholino) ethanesulfonic acid monohydrate (MES) (99%), potassium phosphate monobasic ($\geq 99.0\%$) and sodium hydroxide ($\geq 98.0\%$) were obtained from Sigma-Aldrich (St. Louis, MO, USA). L-histidine (His) (98%) was purchased from Merck (Darmstadt, Germany). Commercial pharmaceutical preparation in the form of tablets

was purchased from a local pharmacy store. Ultrapure water (resistivity, $18.2 \text{ M}\Omega \text{ cm}^{-1}$) was produced by a Milli-Q system (Millipore, MA, USA) and was used throughout for the preparation of solutions. The pH of solutions were determined with a pH-meter (Orion pH meter model EA 940 (Orion Research, Cambridge, USA)). All standards, samples, background electrolyte (BGE) and NaOH solutions were filtered through $0.45 \mu\text{m}$ nylon filter membranes (Agilent Technologies, Waldbronn, Germany).

2.2 Instrumentation and Electrophoretic Conditions

A HP^{3D}CE capillary zone electrophoresis system, model 7100 (Agilent Technologies, Waldbronn, Germany) equipped with C⁴D (eDAQ, Denistone East, Australia) was used. A bare fused-silica capillary $72 \text{ cm} \times 75 \mu\text{m}$ i.d. (detection length, 10.5 cm from the outlet end of the capillary) equipped by Agilent Technologies (Waldbronn, Germany) was employed. The new capillary was conditioned by flushing with 1.0 M NaOH (15 m), followed by 0.1 M NaOH (10 m) and then with water (10 m) before rinsing with BGE solution (15 m). Before the analysis, the capillary was rinsed for 5 m with NaOH (0.1 M), 5 m with water and 5 m with BGE. Between injections, the capillary was preconditioned with NaOH (0.1 M), water and followed by BGE solution (each for 3 m). After the last analysis, the capillary was flushed for 3 m with NaOH (0.1 M) and 3 m with water. Injection of standards and samples were carried out hydrodynamically at 50 mbar for 8 s under the following conditions: voltage, 30 kV (normal polarity); capillary temperature, $17.5 \text{ }^\circ\text{C}$; and BGE, 10 mM (MES) and 10 mM (His) pH 6.8 . The pH of BGE was adjusted with small amounts of NaOH solution. The data was obtained by using PowerChrom software version 2.6.11 (eDAQ, Denistone East, Australia). The dissolution profiles of MH tablets were carried out using Pharma Test dissolution apparatus (Hainburg, Germany).

2.3 Preparation of Standards and BGE

Stock solutions of MH ($1000 \mu\text{g mL}^{-1}$) and PEH ($500 \mu\text{g mL}^{-1}$) were dissolved in water. These solutions were stored at 4°C until the analysis. The BGE solution was prepared from stock solutions of 100 mM MES and 100 mM His. It was filtered through a $0.45 \mu\text{m}$ membrane filter and degassed for 15 m before use.

2.4 Sample Preparation and Analysis Procedure for Assay Test and Dissolution Profiles

Twenty tablets of each product were individually weighed, ground and mixed in a mortar to a fine powder. A 100 mg of the powder was taken and dissolved in water, sonicated using ultrasonic water bath elmasonic, model S 80H (Elma, Schmidbauer GmbH, Singen, Germany) for 15 m and then diluted to 100 mL with water. 1 mL of the solution was diluted to 50 mL after spiking with the internal standard (final concentration, $15 \mu\text{g mL}^{-1}$). The sample was filtered through $0.45 \mu\text{m}$ nylon filter membranes and was introduced to the CE-C⁴D for the analysis.

The dissolution profiles of the MH tablets were determined as specified in the United States Pharmacopeia (USP) [44]. Three drug products (A (Glucophage 500 mg , Merck) as immediate release, B (HovidEuform XR 500 mg , Hovid Berhad) and C (Metformin Hydrochloride ER 850 mg , Cipla) as extended release, 6 tablets per manufacturer) were evaluated. One tablet was added in each one of the six glasses using 1000 mL of freshly phosphate prepared buffer (pH = 6.8) as dissolution medium. The bath temperature was operated at $37 \pm 0.5 \text{ }^\circ\text{C}$. Paddle dissolution apparatus was used at stirring speed of 50 rpm for product A and 100 rpm for products B and C. Sampling for the product A was done at $10, 20, 30, 45$ and 60 m while for products B and C were at $1, 2, 3, 6$ and 10 h . The solutions were filtered through $0.45 \mu\text{m}$ nylon filter membranes, diluted in water and then transferred to the CE vials after spiking with IS.

3. RESULTS AND DISCUSSION

3.1 Optimization of C⁴D and Instrumental Conditions

The selection of BGE constituents is important and it should have low conductivity that will lead to small joule heating [45]. Mixtures of MES and His was used to ensure that the background conductivity is as low as possible. As MH is a strongly basic compound ($\text{pK}_a = 12.4$) [16], it is positively charged under acidic conditions. Initially, the pH of the MES/His buffer was 6.1 . Since MH is not completely deprotonated at pH 6.1 , small amounts of NaOH solution were added in order to increase its pH. The BGE pH was therefore varied from 6.4 - 7.0 . Good separation of MH with good peak shape and sensitivity was

obtained when the BGE pH was 6.8. Therefore, it was selected for further studies. The effect of the concentration of MES/His buffer (5-15 mM) on the separation was also investigated. The peak was found to be broadened as the concentration of buffer is increased. 10 mM MES/His was selected as it gave the highest response and symmetrical peaks.

The detector should be operated at its optimum frequency, which is as low as possible to reduce the impact of stray capacitance [46]. The frequency was studied from 550 to 700 kHz. The highest signal and more stable baseline were found when 650 kHz used at 2V (Fig. 2). The effect of applied voltage (25–30 kV) on the migration time and separation were also studied. When 30 kV was used, sharper peaks with shorter analysis time were obtained. Therefore, 30 kV was selected for the subsequent work. The effect of capillary temperature (15-25°C) was also investigated. Best peak shapes and stable baselines were obtained at 17.5°C. Optimization of sample injection time (3–9 s) at 50 mbar was conducted to achieve a lower detection limit without affecting the quality of the peak shape, reproducibility and migration time. An injection time of 8 s offered the best results and was selected for the rest of the studies.

The selected conditions are summarized in Table 1 while Fig. 3 shows typical electropherogram. It is clear that the selected electrophoretic conditions provide good quality peaks. Table 2 summarizes a comparison of the important parameters of the present method and those reported in the literature.

3.2 Validation of Analytical Method

3.2.1 Linearity

Under the optimized conditions, linearity of the calibration plots was studied using standard MH to cover concentrations levels (10-30 $\mu\text{g mL}^{-1}$) with PEH (15 $\mu\text{g mL}^{-1}$) as IS. Calibration curve was established by plotting the corrected peak area (y) versus MH concentration (x) in $\mu\text{g mL}^{-1}$. Calibration curves were linear over the studied concentration range. The regression equation and correlation coefficient were: $y = 0.0522 x - 0.0543$ ($r^2 = 0.997$).

3.2.2 Limits of detection and quantitation

The limits of detection (LOD) and quantitation (LOQ) were calculated based on the signal-to-noise ratio (S/N) of 3 and 10, respectively. The obtained LOD and LOQ values were 0.049 and

Table 1. Optimum CE-C⁴D operating conditions

Background electrolyte	10 mM MES/His, pH 6.8
Applied voltage	30 kV (normal polarity)
Injection time	8 s hydrodynamic (50 mbar)
Capillary temperature	17.5°C
Bare fused silica capillary	72 cm × 75 μm i.d (detection length, 10.5 cm from the outlet end of the capillary)
C ⁴ D detector configuration	Amplitude, 100 V; frequency, 650 kHz

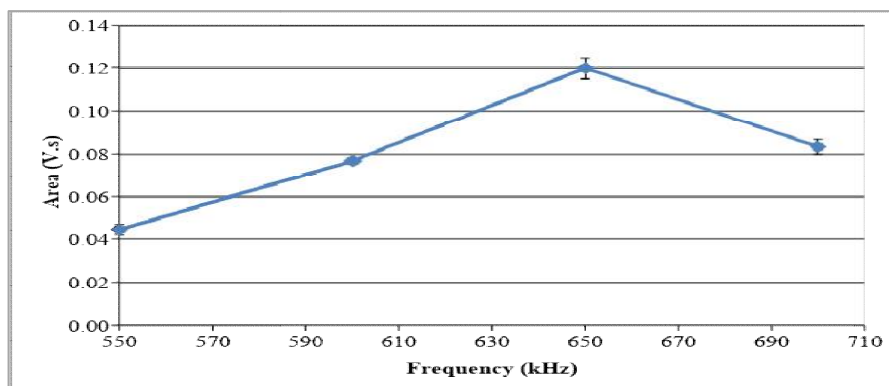


Fig. 2. Effect of excitation frequency (kHz) on peak area. CE-C4D conditions: BGE, 10 mM MES/His (pH6.8); applied voltage, 30 kV; capillary temperature, 25 °C

Table 2. Comparison of the proposed CE-C⁴D method with other reported methods for the determination of MH

Instrumentation	Detection	Sample preparation	Type of sample	Migration/ Retention time (m)	LOD (ng mL ⁻¹)	LOQ (ng mL ⁻¹)	Repeatability (%RSD)	Recovery (%)	Reference
CE ^a	C ⁴ D ^b	Dilution	Tablet	3.7	49	150	≤7.5	96.5-101	Current work
CE	C ⁴ D	—	Herbal formulations	4.8	3200	9730	≤1.04	96.2-100.9	26
CE	MS ^d	PP ^e	Serum	8.5	2.14	7.06	≤ 3.4	85.5	27
CE	ECL ^f	LLE ^g + Driv ^h	Urine	3.1	0.31	1	≤ 1.7	98.5-99.7	28
CE	UV ⁱ	FASS ^j	Plasma	4	100	250	≤12.4	58.9-80.2	29
Non-aqueous CE	UV	SPE ^k	Plasma	1.75	12	—	—	—	30
CE	UV	Dilution	Tablet	6.2	500	1000	≤1.78	102-103	31
CE	UV	—	Plasma	2.5	30	100	≤1.7	97.3	32
CE	UV	Dilution	Tablet	5	830	2500	≤2.9	97.6-102	33
CE	DAD ^l	Dilution	Tablet	5.0	2000	8000	≤1.72	99.9-101	34
CE	DAD	Dilution	Tablet	9.79	30×10 ³	100×10 ³	≤1.77	98.3-100	35
GC	MS	PP	Plasma	5.5	40	100	≤ 15	69.8-84.1	5
GC ⁱ	FID ^j	Driv + Dilution	Tablet	7.0	0.025	0.075	≤3.9	96.3	6
LC ^k	MS/MS ^l	PP ^m	Plasma	1.2	—	0.02	≤15	77-9	4
LC	UV	PP	Plasma	7.5	—	0.03	≤11.28	87.3-98.2	7
LC	UV	PP	Plasma	5.0	0.100	0.250	≤5.65	91.4-97.6	8
LC	PDA ⁿ	Dry blood spot	Blood	5.5	0.09	0.15	≤15	84.0-86.5	9
LC	UV	Dilution	Tablet	10.59	0.1	0.350	—	99.8-101	16
LC	UV	Dilution	Tablet	5.04	0.023	0.069	1.01	99.4-101	17

^aCapillary electrophoresis, ^bCapacitively coupled contactless conductivity detection, ^cLarge volume sample stacking, ^dMass spectrometry, ^eProtein Precipitation, ^fElectrochemiluminescence, ^gLiquid-liquid extraction,

^hDerivatization, ⁱUltraviolet detection, ^jField-amplified sample stacking, ^kSolid-phase extraction, ^lDiode array detection, ^mGas chromatography, ⁿFlame ionization detector, ^oLiquid chromatography, ^pTandem mass spectrometry, ^qphotodiode array detector

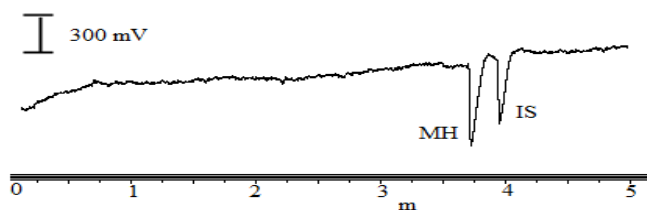


Fig. 3. Electropherograms of standard MH ($100 \mu\text{g mL}^{-1}$) under the optimum CE conditions (Table 1)

$0.15 \mu\text{g mL}^{-1}$, respectively. These values are lower than the previously reported CE methods using UV or DAD detectors but higher than the electrochemiluminescence with LLE and derivatization, mass spectrometry, C^4D with large volume sample stacking and UV with Solid-phase extraction detectors (Table 2).

3.2.3 Precision

Intra-day precision was evaluated by introducing three different preparations of the standard solutions at three concentration levels (10 , 20 and $30 \mu\text{g mL}^{-1}$) on the same day ($n = 9$). Each concentration was injected three times, while the inter-day precision was evaluated over six consecutive days ($n = 54$). The relative standard deviation (RSD%) values for migration time and corrected peak area were less than 1.2 and 7.5% , respectively. The results are displayed in Table 3, demonstrating the good repeatability of the method.

3.2.4 Accuracy

The accuracy of the proposed method was determined by conducting recovery experiments at three different concentrations (10 , 20 and $30 \mu\text{g mL}^{-1}$). Recoveries were performed by adding known amounts of MH and IS to the analytical placebo solution. Each concentration level was

prepared in triplicates and introduced to the CE- C^4D thrice. The results obtained are summarized in Table 4. The good recoveries obtained indicate the potential of this method for the determination of the MH in pharmaceutical formulations.

3.3 Assay and Dissolution Profiles of MH in Pharmaceutical Preparations

The validated CE- C^4D method was applied for the assay of three commercial products (A, B and C) that have different amounts of MH. Each product was prepared twice and introduced thrice to the CE- C^4D system for the separation. Good agreement between the total value as claimed by the manufacturer and the developed CE- C^4D method was obtained (Table 5).

Dissolution profiles of each product were also established. The drug released was plotted against time. Product A maintained a dissolution rate of $> 80\%$ by the end of the 30 m. The USP requires only one time point (30 m) to be used for the analysis immediate release tablet. However, in the present studies, five data points (10 , 20 , 30 , 45 and 60 m) were obtained. The dissolution rate for product B and C were $> 85\%$ by the end of 10 h. As shown in Fig. 4 (A and B) the dissolution profiles of all drug products met the USP specifications at each time point.

Table 3. Intra-day and inter-day precision (%RSD) of the MH standard solution using CE- C^4D

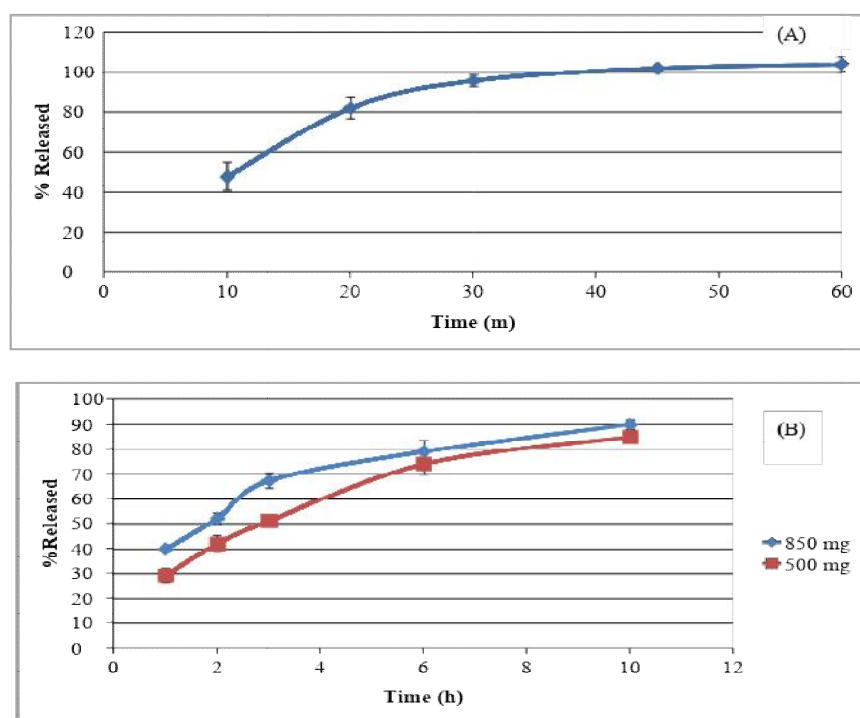
MH concentration($\mu\text{g mL}^{-1}$)	Relative standard deviation, RSD (%)	
	Migration time	Corrected peak area
Intra-day precision(n=9)		
10	0.4	6.3
20	0.2	6.7
30	0.3	6.9
Inter-day precision(n=54)		
10	1.2	6.6
20	1.2	7.5
30	1.3	5.8

Table 4. Recoveries obtained from the determination of MH in placebos

$\mu\text{g mL}^{-1}$	% Recovery \pm SD (n = 9)		
	A	B	C
10	101 \pm 1.2	101 \pm 0.58	100 \pm 0.81
20	100 \pm 1.1	100 \pm 1.6	99.4 \pm 2.4
30	96.5 \pm 1.9	97.5 \pm 2.6	99.6 \pm 2.1

Table 5. Assay results of MH in different pharmaceutical formulation

Product	Label claim (mg)	%Agreement \pm SD
A	500	99.8 \pm 3.4
B	500	99.4 \pm 3.1
C	850	101 \pm 2.4

**Fig. 4. Dissolution profiles of (A) immediate release and (B) extended release formulations. Refer to text for experimental conditions**

4. CONCLUSION

The determination of MH in pharmaceutical formulations was successfully developed and optimized using CE-C⁴D method. The simplicity (no need for derivatization), good sensitivity (LOQ value 0.15 $\mu\text{g mL}^{-1}$), rapidity, good accuracy and low cost (low consumption of reagents and samples) are the major advantages of this method. The assay method was applied to determine the content of MH in three commercial products. The usefulness of described method is

proven by successful application for the analysis of MH in tablet formulations and establishing dissolution profiles of different MH tablets, thus lending itself as an interesting alternative analytical tool for quality control laboratories.

ACKNOWLEDGEMENTS

Gazala Ben-Hander thanked the Government of Libya for providing a postgraduate scholarship. Financial support of the work by Universiti Sains Malaysia and Research University Grant is gratefully acknowledged.

COMPETING INTERESTS

Authors have declared that no competing interests exist.

REFERENCES

- Huttunen KM, Rautio J, et al. Determination of metformin and its prodrugs in human and rat blood by hydrophilic interaction liquid chromatography. *J. Pharm. Biomed. Anal.* 2009;50: 469-474.
- Adikwu MU, Yoshikawa Y, Takada K. Pharmacodynamic–pharmacokinetic profiles of metformin hydrochloride from a mucoadhesive formulation of a polysaccharide with antidiabetic property in streptozotocin-induced diabetic rat models. *Biomaterials.* 2004;25:3041-3048.
- Lautatzis ME, Goulis DG, Vrontakis M. Efficacy and safety of metformin during pregnancy in women with gestational diabetes mellitus or polycystic ovary syndrome: A systematic review. *Metabolism.* 2013;62:1522-1534.
- Marques MAS, Soares ADS, et al. Simple and rapid method determination for metformin in human plasma using high performance liquid chromatography tandem mass spectrometry: Application to pharmacokinetic studies. *J. Chromatogr. B.* 2007;852:308-316.
- Ucakturk E. The development and validation of a gas chromatography-mass spectrometry method for the determination of metformin in human plasma. *Anal. Methods.* 2013;5:4723-4730.
- Majidano SA, Khuhawar MY. GC determination of famotidine, ranitidine, cimetidine, and metformin in pharmaceutical preparations and serum using methylglyoxal as derivatizing reagent. *Chromatographia.* 2012;75:1311-1317.
- Porta V, Schramm SG, et al. HPLC-UV determination of metformin in human plasma for application in pharmacokinetics and bioequivalence studies. *J. Pharm. Biomed. Anal.* 2008;46:143-147.
- Yardimci C, Ozaltin N, Gurlek A. Simultaneous determination of rosiglitazone and metformin in plasma by gradient liquid chromatography with UV detection. *Talanta.* 2007;72:1416-1422.
- Aburuz S, Millership J, Mcelnay J. Dried blood spot liquid chromatography assay for therapeutic drug monitoring of metformin. *J. Chromatogr. B.* 2006;832:202-207.
- Ben-Hander GM, Makahleh A, Saad B, Saleh MI, Hollow J. Fiber liquid phase microextraction with in situ derivatization for the determination of trace amounts of metformin hydrochloride (anti-diabetic drug) in biological fluids. *Chromatogr. B.* 2013;941:123-130.
- Aburuz S, Millership J, Mcelnay J. Determination of metformin in plasma using a new ion pair solid phase extraction technique and ion pair liquid chromatography. *J. Chromatogr. B.* 2003;798:203-209.
- Zarghi A, Foroutan SM, Shafaati A, Khoddam A. Rapid determination of metformin in human plasma using ion-pair HPLC. *J. Pharm. Biomed. Anal.* 2003;31: 197-200.
- Zhang M, Moore GA, Lever M, et al. Rapid and simple high-performance liquid chromatographic assay for the determination of metformin in human plasma and breast milk. *J. Chromatogr. B.* 2001;766:175-179.
- Juan JJ, Fang F, Ming M, Xing ZZ. Study on a new precolumn derivatization method in the determination of metformin hydrochloride. *J. Chromatogr. Sci.* 2006; 44:193-199.
- Tache F, David V, Farca A, Medvedovici A. HPLC-DAD determination of Metformin in human plasma using derivatization with *p* nitrobenzoyl chloride in a biphasic system. *Microchem. J.* 2001;68:13-19.
- Ali MS, Rafiuddin S, Ghori M, Khatri AR. Simultaneous determination of metformin hydrochloride, cyanoguanidine and melamine in tablets by mixed-mode HILIC. *Chromatographia.* 2008;67:517-525.
- Kolte BL, Raut BB, Deo AA, Bagool MA, Shinde DB. Simultaneous determination of metformin in combination with rosiglitazone by reversed-phase liquid chromatography. *J. Chromatogr. Sci.* 2004;42:70-73.
- Ghassempour A, Ahmadi M, Ebrahimi SN, Aboul-Enein HY. Simultaneous determination of metformin and glyburide in tablets by HPTLC. *Chromatographia.* 2006;64:101-104.
- Ohta M, Iwasaki M, Kai M, Ohkura Y. Determination of a biguanide, metformin, by high-performance liquid chromatography with precolumn fluorescence derivatization. *Anal. Sci.* 1993;9:217-219.

20. Wu X, Zhu B, Lu L, Huang W, Pang D. Optimization of a solid phase extraction and hydrophilic interaction liquid chromatography–tandem mass spectrometry method for the determination of metformin in dietary supplements and herbal medicines, *Food Chem.* 2012;133: 482-488.
21. Nuijs ALNV, Tarcomnicu I, Simons W, Bervoets L, et al. Optimization and validation of a hydrophilic interaction liquid chromatography-tandem mass spectrometry method for the determination of 13 top-prescribed pharmaceuticals in influent wastewater, *Anal. Bioanal. Chem.* 2010;398:2211-2222.
22. Polagani SR, Pilli NR, Gajula R, Gandu V. Simultaneous determination of atorvastatin, metformin and glimepiride in human plasma by LC–MS/MS and its application to a human pharmacokinetic study. *J. Pharm. Biomed. Anal.* 2013;3:9-19.
23. Koseki N, Kawashita H, et al. Development and validation for high selective quantitative determination of metformin in human plasma by cation exchanging with normal-phase LC/MS/MS. *J. Pharm. Biomed. Anal.* 2005;36:1063-1072.
24. Chen X, Gu Q, Qiu F, Zhong D. Rapid determination of metformin in human plasma by liquid chromatography–tandem mass spectrometry method. *J. Chromatogr. B.* 2004;802:377-381.
25. Heinig K, Bucheli F. Fast liquid chromatographic-tandem mass spectrometric (LC–MS–MS) determination of metformin in plasma samples. *J. Pharm. Biomed. Anal.* 2004;34:1005-1011.
26. Viana C, Ferreira M, Romero CS, Bortoluzzi MR, et al. A capillary zone electrophoretic method for the determination of hypoglycemics as adulterants in herbal formulations used for the treatment of diabetes. *Anal. Methods.* 2013;5:2126-2133.
27. Znaleziona J, Maier V, Ranc V, Sevcik J. Determination of rosiglitazone and metformin in human serum by CE-ESI-MS. *J. Sep. Sci.* 2011;34:1167-1173.
28. Deng B, Shi A, Kang Y, Li L. Determination of metformin hydrochloride using precolumn derivatization with acetaldehyde and capillary electrophoresis coupled with electrochemiluminescence, *Luminescence.* 2011;26:592-597.
29. Song JZ, Chen HF, Tian SJ, Sun ZP. Determination of metformin in plasma by capillary electrophoresis using field-amplified sample stacking technique. *J. Chromatogr. B.* 1998;708:277-283.
30. Lai EPC, Feng SY. Solid phase extraction-non-aqueous capillary electrophoresis for determination of metformin, phenformin and glyburide in human plasma. *J. Chromatogr. B.* 2006;843:94-99.
31. Yardimci C, Ozaltin N. Method development and validation for the simultaneous determination of rosiglitazone and metformin in pharmaceutical preparations by capillary zone electrophoresis. *Anal. Chim. Acta.* 2005;549:88-95.
32. Wei SY, Yeh HH, Liao FF, Chen SH. CE with direct sample injection for the determination of metformin in plasma for type 2 diabetic mellitus: An adequate alternative to HPLC. *J. Sep. Sci.* 2009;32:413-421.
33. Barden AT, Piccoli BL, Volpato NM, Steppe M. A simultaneous assay method using capillary zone electrophoresis for a fixed dose combination of vildagliptin and metformin hydrochloride in coated tablets, *Anal. Methods.* 2013;5:5701-5708.
34. Hamdan II, Jaber AKB, Abushoffa AM. Development and validation of a stability indicating capillary electrophoresis method for the determination of metformin hydrochloride in tablets. *J. Pharm. Biomed. Anal.* 2010;53:1254-1257.
35. Doomkaew A, Prutthiwanasan B, Suntornsuk L. Simultaneous analysis of metformin and cyanoguanidine by capillary zone electrophoresis and its application in a stability study. *J. Sep. Sci.* 2014.
36. Kuban P, Foret F, Bocek R. Capillary electrophoresis with contactless conductometric detection for rapid screening of formate in blood serum after methanol intoxication. *J. Chromatogr. A.* 2013;1281:142-147.
37. Pormsila W, Krahenbuhl S, Hauser PC. Capillary electrophoresis with contactless conductivity detection for uric acid determination in biological fluids, *Anal. Chim. Acta.* 2009;636:224-228.
38. Mai TD, Hauser PC. Simultaneous separations of cations and anions by capillary electrophoresis with contactless conductivity detection employing a sequential injection analysis manifold for

- flexible manipulation of sample plugs. J. Chromatogr. A. 2012;1267:266-272.
39. See HH, Schmidt-Marzinkowski J, Pormsila W, Morand R, Krahenbuhl S, Hauser PC. Determination of creatine and phosphocreatine in muscle biopsy samples by capillary electrophoresis with contactless conductivity detection. Anal. Chim. Acta. 2012;727:78-82.
40. Kuban P, Hauser PC. Contactless conductivity detection for analytical techniques: Developments from 2010 to 2012, Electrophoresis. 2013;34:55-69.
41. Elbashir AA, Aboul-Enein HY. Recent advances in applications of capillary electrophoresis with capacitively coupled contactless conductivity detection (CE-C⁴D): An update. Biomed. Chromatogr. 2012;26:990-1000.
42. Kuban P, Hauser PC, Contactless conductivity detection in capillary electrophoresis: A review. Electroanalysis. 2004;16:2009-2021.
43. Kuban P, Hauser PC. Capacitively coupled contactless conductivity detection for microseparation techniques – recent developments. Electrophoresis. 2011;32:30-42.
44. The United States Pharmacopoeia, Pharmacopeial Forum. 2007;30:2596.
45. Chaisuwan P, Kongprasertsak T, Sangcakul A, Smith NW, Nachapricha D, Wilairat P, Uraisin K. Direct injection of human serum and pharmaceutical formulations for glucosamine determination by CE-C⁴D method. J. Chromatogr B. 2011;879:2185-2188.
46. Kuban P, Hauser PC. Ten years of axial capacitively coupled contactless conductivity detection for CZE- a review, Electrophoresis. 2009;30:176-188.

© 2019 Ben-Hander et al.; This is an Open Access article distributed under the terms of the Creative Commons Attribution License (<http://creativecommons.org/licenses/by/4.0>), which permits unrestricted use, distribution, and reproduction in any medium, provided the original work is properly cited.

Peer-review history:
The peer review history for this paper can be accessed here:
<http://www.sdiarticle3.com/review-history/47236>